

# MRCOOL® Mini-Split Remote Control Owner's Manual

## MODELS:

DIY® Outtasight® One-Way Cassette

Olympus Four-Way Cassette



Read this manual carefully before installation and keep it where the operator can easily find it for future reference.

Due to updates and constantly improving performance, the information and instructions within this manual are subject to change without notice.

Version Date: 5/20/2025

Please visit [www.mrcool.com/documentation](http://www.mrcool.com/documentation) to ensure you have the latest version of this manual.



## CONTENTS

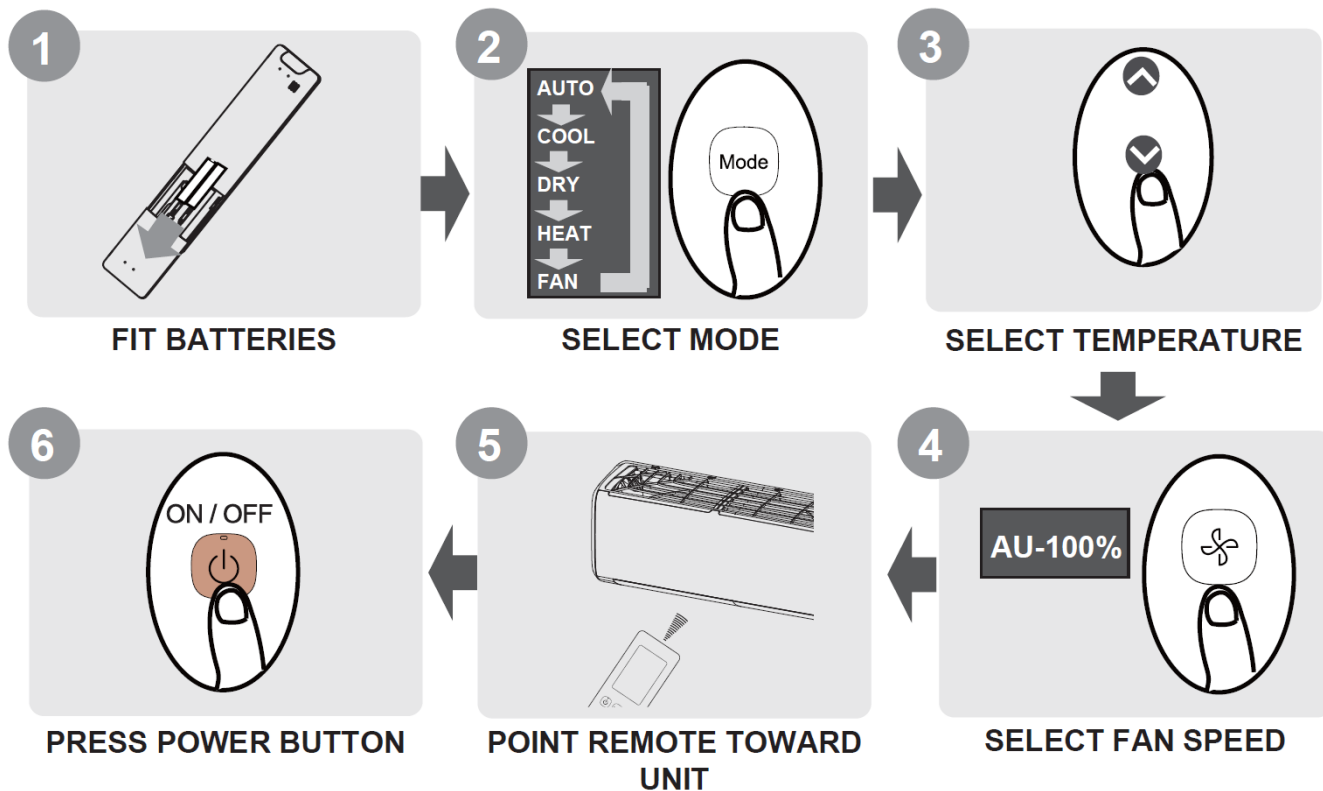
<b>1</b>	<b>SPECIFICATIONS &amp; COMPATIBILITY</b> .....	2
<b>2</b>	<b>QUICK-START GUIDE</b> .....	2
<b>3</b>	<b>HANDLING</b> .....	3
	3.1 Inserting & Replacing Batteries .....	3
	3.2 Remote Interference .....	3
<b>4</b>	<b>BUTTONS &amp; FUNCTIONS</b> .....	4
<b>5</b>	<b>REMOTE SCREEN INDICATORS</b> .....	5
<b>6</b>	<b>BASIC FUNCTIONS</b> .....	6
	6.1 Auto Mode .....	6
	6.2 Cool Mode.....	6
	6.3 Dry Mode .....	6
	6.4 Fan Mode .....	6
	6.5 Heat Mode.....	7
	6.6 Setting the Timer .....	7
<b>7</b>	<b>ADVANCED FUNCTIONS</b> .....	8
	7.1 Swing Function.....	8
	7.2 Airflow Direction.....	8
	7.3 LED Display.....	8
	7.4 Lifting Panel Function .....	8
	7.5 Breeze Away Function.....	8
	7.6 Silence Function.....	8
	7.7 ECO/GEAR Function.....	9
	7.8 FP Function.....	9
	7.9 Lock Function.....	9
	7.10 Turbo Function .....	9
	7.11 Super Heat Function .....	9
	7.12 Set Function .....	10

## 1 - Specifications & Compatibility

<b>Rated Voltage</b>	3.0V (Dry Batteries R03/LR03x2)
<b>Signal Receiving Range</b>	26 ft (8m)
<b>Environment</b>	23°F~140°F (-5°C~60°C)

<b>Compatible Models:</b>	
<b>DIY®</b>	<b>Olympus</b>
DIYCASSETTE06HP-230D25	CASSETTE09HP-230C-O
DIYCASSETTE09HP-230D25	CASSETTE12HP-230C-O
DIYCASSETTE12HP-230D25	CASSETTE18HP-230C-O
DIYCASSETTE18HP-230D25	CASSETTE24HP-230C-O

## 2 - Quick Start Guide



### NOT SURE WHAT A FUNCTION DOES?

Refer to the "How to use Basic Functions" and "How to Use Advanced Functions" sections of this manual for a detailed description of how to use the unit.

### SPECIAL NOTE

- Button designs on your unit may differ slightly from the example shown.
- If the indoor unit does not have a particular function, pressing that function's button on the remote control will have no effect.

## 3.1 Inserting & Replacing Batteries

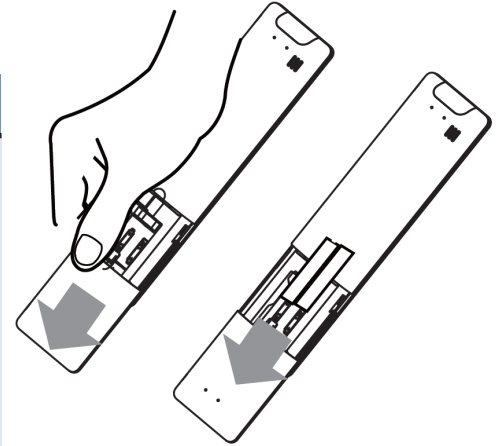
The unit includes two batteries. Put the batteries in the remote control before use.

1. Slide the back cover from the remote control downward, exposing the battery compartment.
2. Insert the batteries, paying attention to match up the (+) and (-) ends of the batteries with the symbols inside the battery compartment.
3. Slide the battery cover back into place.

### REMOTE NOTES & TIPS

For optimum product performance:

- Do not mix old and new batteries, or batteries of different types.
- Do not leave batteries in the remote control if you don't plan on using the device for more than 2 months.
- Do not dispose of batteries as unsorted municipal waste. Refer to local laws for proper disposal requirements of batteries.
- Direct sunlight can interfere with the infrared signal receiver.
- There must be a clear line of sight between the remote and the appliance.
- If the signals from the remote control happen to control another appliance, move the appliance to another location or contact customer service.
- Batteries may have a chemical symbol at the bottom of the disposal icon. This chemical symbol means that the battery contains a heavy metal that exceeds a certain concentration. An example is Pb: Lead (>0.004%).
- Appliances and used batteries must be treated in a specialized facility for reuse, recycling, and recovery. By ensuring correct disposal, you will help avoid possible negative consequences for human health & the environment.



## 3.2 Remote Interference

The remote should comply with the local national regulations.

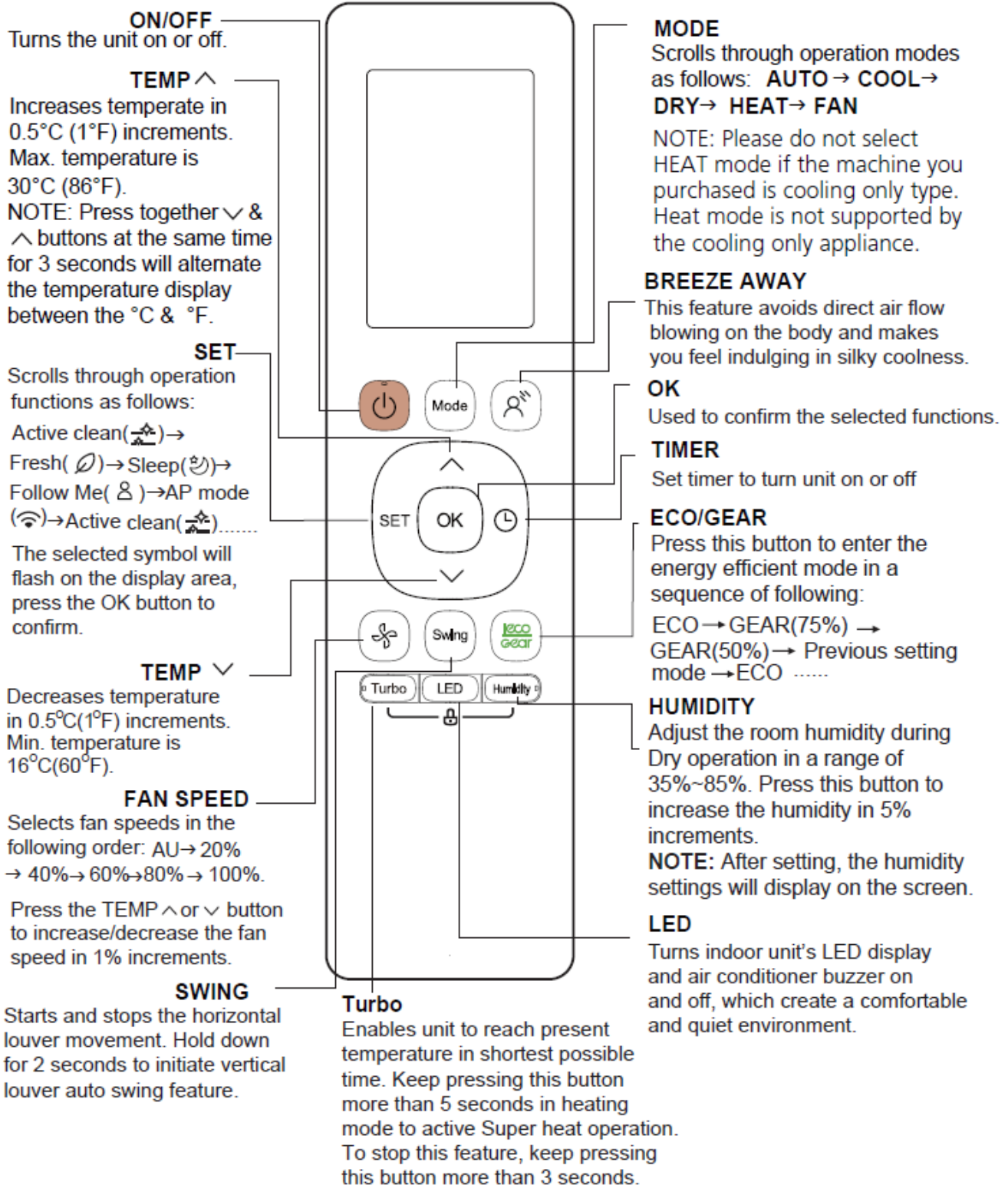
- In Canada, it should comply with CAN ICES-3(B)/NMB-3(B).
- In USA, this device complies with part 15 of the FCC Rules. Operation is subject to the following two conditions:
  1. This device may not cause harmful interference and
  2. This device must accept any interference received, including those that may cause undesired operation.

This equipment has been tested and found to comply with the limits for a Class B digital device, pursuant to part 15 of the FCC Rules. These limits are designed to provide reasonable protection against harmful interference in a residential installation. This equipment generates, uses, and can radiate radio frequency energy and, if not installed and used in accordance with the instructions, may cause harmful interference to radio communications. However, there is no guarantee that interference will not occur in a particular installation. If this equipment does cause harmful interference to radio or television reception, which can be determined by turning the equipment off and on, the user is encouraged to try to correct the interference by one or more of the following measures:

- Reorient or relocate the receiving antenna
- Increase the separation between the equipment and receiver
- Connect the equipment into an outlet on a circuit different from that to which the receiver is connected.
- Consult your dealer or an experienced radio/TV technician for help.
- Changes or modifications not approved by the party responsible for compliance could void the user's authority to operate the equipment.

## 4 - Buttons & Functions

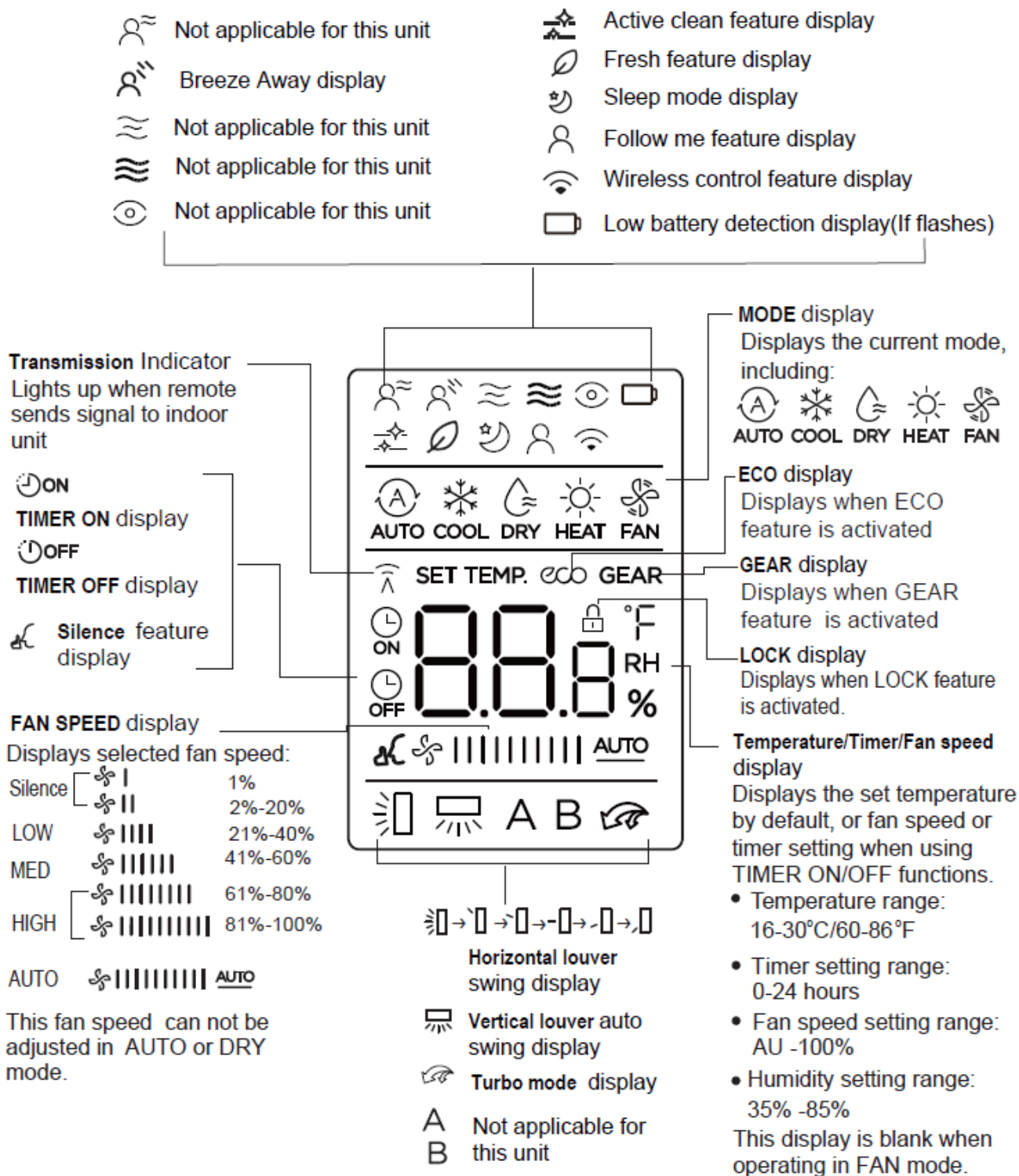
Before you begin using your new air conditioner, make sure to familiarize yourself with the remote control. The following is a brief introduction to the remote control itself. For instructions on how to operate your air conditioner, refer to the "How to Use Basic Functions" section of this manual.



# 5 REMOTE SCREEN INDICATORS

## 5 - Remote Screen Indicators

Information is displayed when the remote is powered on.



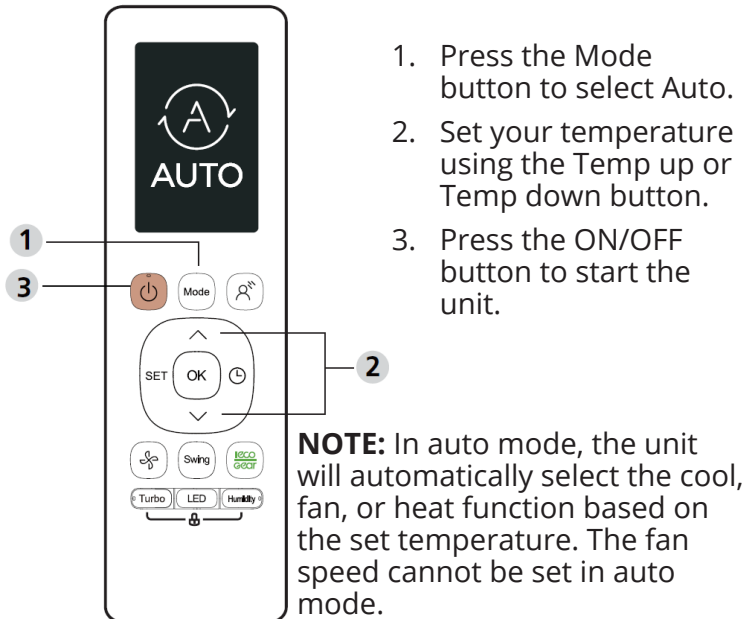
All indicators shown in the figure are for the purpose of clear presentation. But during the actual operation, only the relative function signs are shown on the display window.



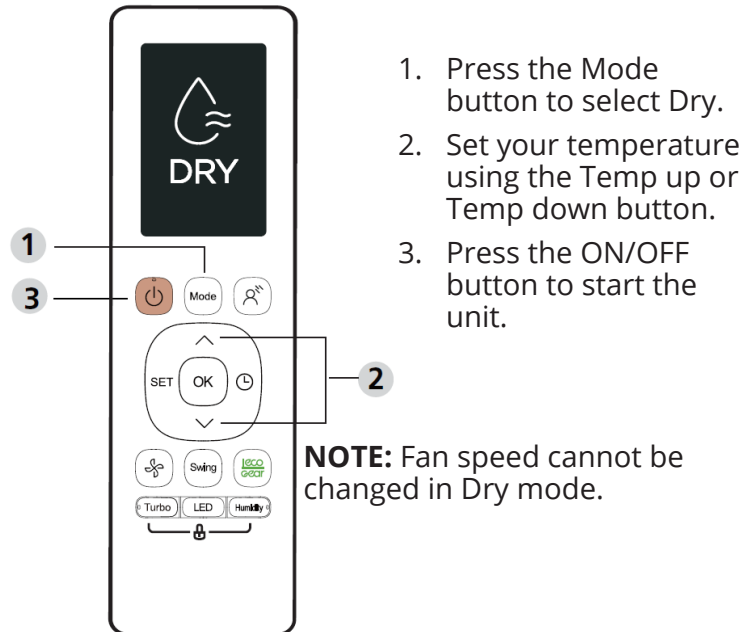
## SETTING TEMPERATURE

The operating temperature range for units is 60-86°F (16-30°C). You can increase or decrease the set temperature in 1°F (0.5°C) or 1°F (1°C) increments.

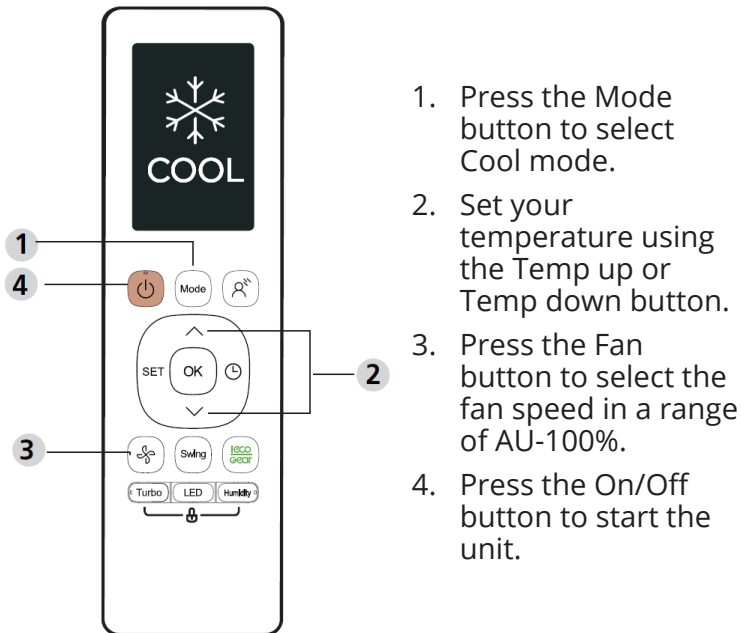
### 6.1 Auto Mode



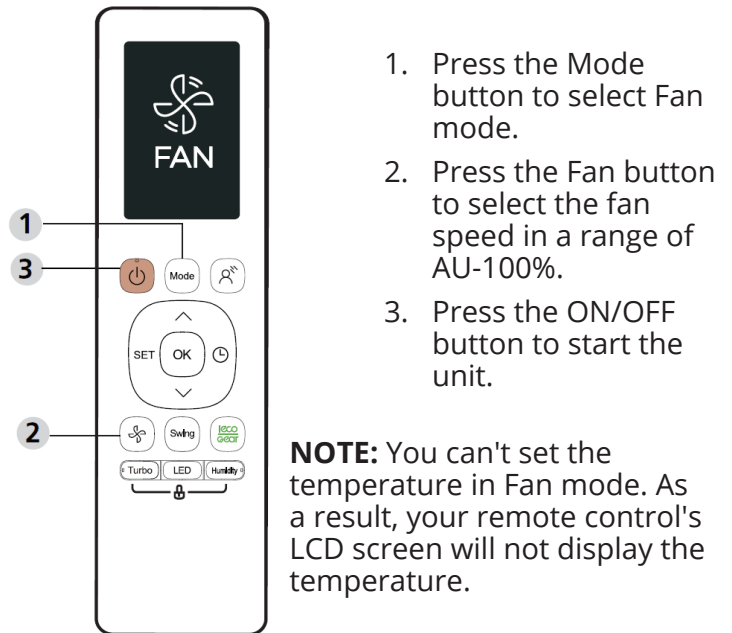
### 6.3 Dry Mode



### 6.2 Cool Mode

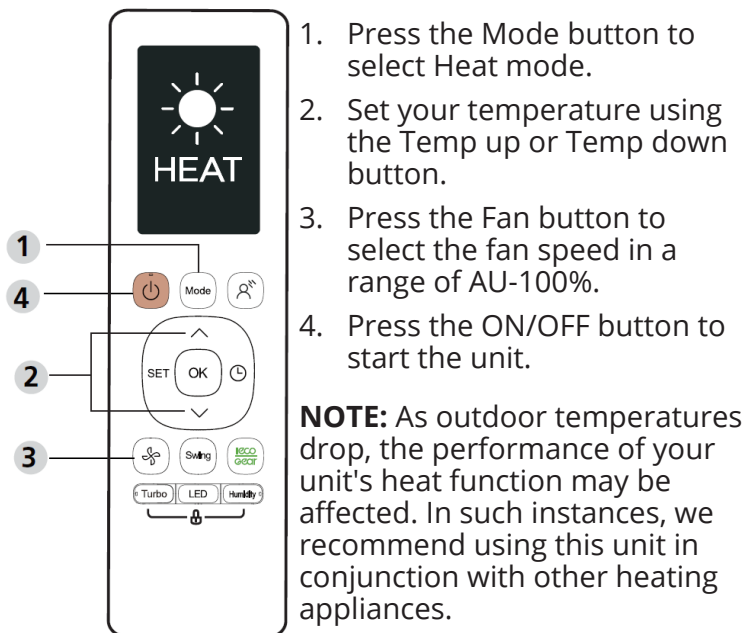


### 6.4 Fan Mode



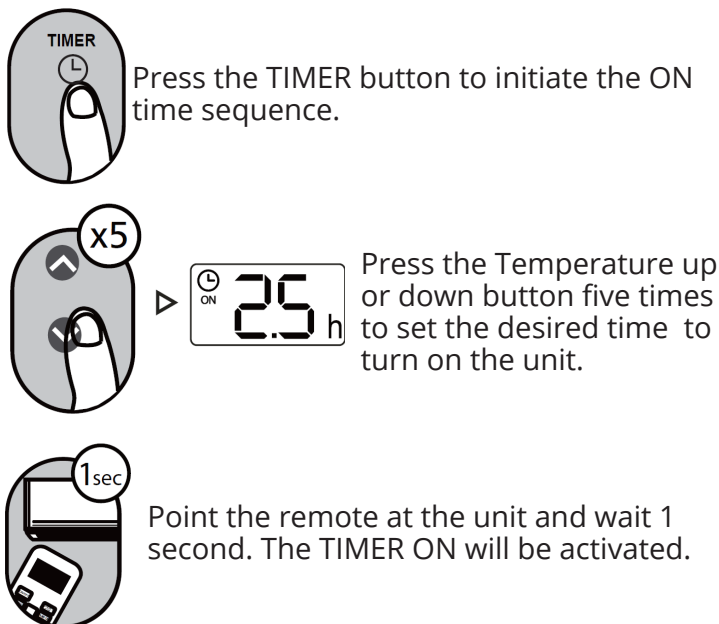
# 6 BASIC FUNCTIONS

## 6.5 Heat Mode

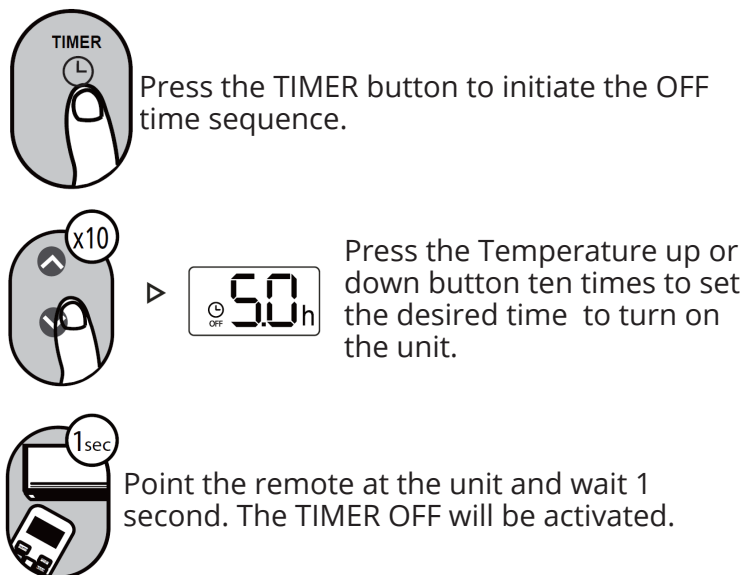


## 6.6 Setting the Timer

### TIMER ON Setting:



### TIMER OFF Setting:

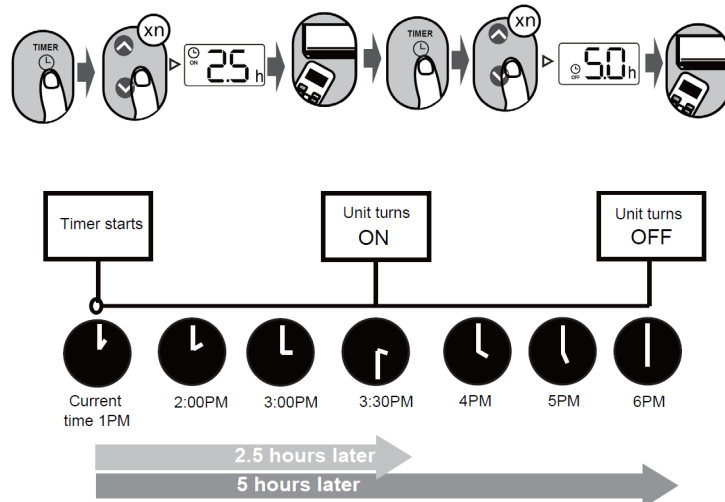


#### NOTE:

1. When setting the TIMER ON or TIMER OFF, the time will increase by 30 minute increments with each press, up to 10 hours. After 10 hours and up to 24, it will increase in 1 hour increments. (For example, press 5 times to get to 2.5h, and press 10 times to get to 5h.) The timer will revert to 0.0 after 24.
2. Cancel either function by setting its timer to 0.0h.

### TIMER ON & OFF Setting Example:

Keep in mind that the time periods you set for both functions refer to hours after the current time.

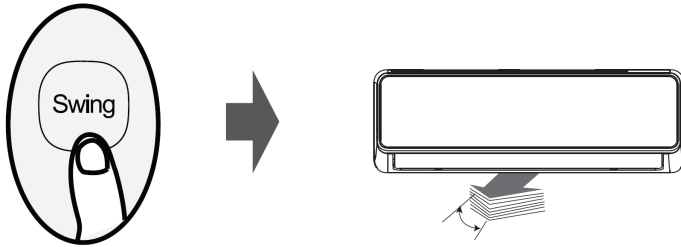


Example: If current time is 1:00pm, the unit will turn on 2.5 hours later (3:30pm) and turn off at 6:00pm.

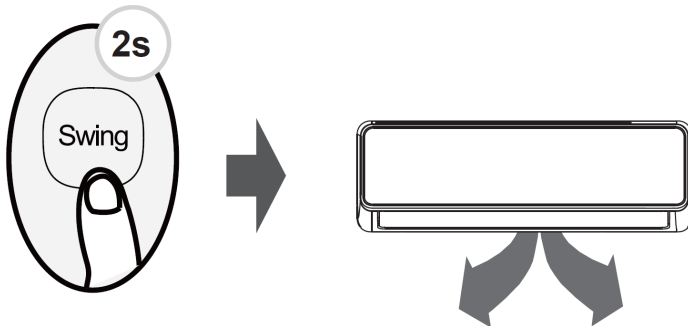


## 7.1 Swing Function

Press Swing button.

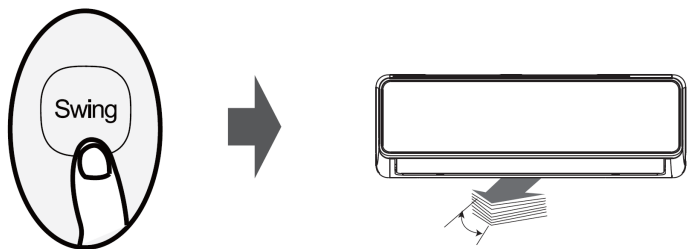


The horizontal louver will swing up and down automatically when pressing the Swing button. Press again to make it stop.



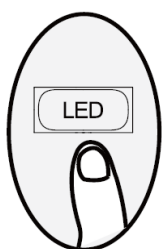
When this button is pressed for more than 2 seconds, the vertical louver swing function is activated.

## 7.2 Airflow Direction



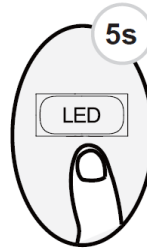
When the Swing button is continuously pressed, five different airflow directions can be set. The louver will move to a different range each time the button is pressed. Press the button until the preferred direction is reached.

## 7.3 LED Display



Press the LED button to turn on and turn off the display of the indoor unit.

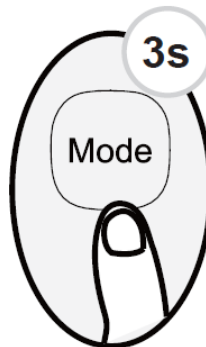
5s



When this button is pressed for more than 5 seconds, the indoor unit will display the actual room temperature. Pressing for more than 5 seconds again will revert back to displaying the setting temperature.

## 7.4 Lifting Panel Function

3s



3s



Press the Mode button and arrow down button simultaneously for more than 3 seconds to activate this function. The remote will display "F2". When setting the panel status, press the up or down arrow buttons of the remote control to control the rise or fall of the grille. Press any other button to exit the setting.

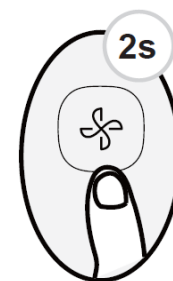
## 7.5 Breeze Away Function



This feature prevents airflow from blowing directly on the body.  
NOTE: This feature is available under Cool, Fan, and Dry modes only.

## 7.6 Silence Function

2s



When the fan button is pressed for more than 2 seconds, the Silence function will activate/deactivate.

Due to the compressor's low frequency of operation, it may result in insufficient cooling or heating capacity. Press ON/OFF, Mode, Turbo, or Clean buttons while operating to cancel the silence function.

# 7 ADVANCED FUNCTIONS

## 7.7 ECO/GEAR Function



Press the ECO/GEAR button to enter the energy-efficient mode in the following sequence:

ECO > GEAR (75%) > Previous Setting Mode > ECO...

(Note: Only available in COOL mode.)

### ECO Operation:

Under cooling mode, press this button, and the remote controller will adjust the temperature automatically to 75°F/24°C, set fan speed to Auto (when the set temperature is less than 75°F/24°C). If the set temperature is above 75°F/24°C, press the ECO button, the fan speed will change to Auto, and the set temperature will remain unchanged.

**Note:** Pressing the ECO button, or modifying the mode or adjusting the set temperature to less than 75°F/24°C will stop ECO operation. Under ECO operation, the set temperature should be 75°F/24°C or above, or it may result in insufficient cooling. If uncomfortable, press the ECO button again to stop it.

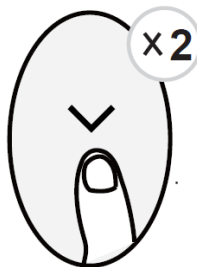
### GEAR Operation:

Press the ECO/GEAR button to enter the GEAR operation as following:

75% (up to 75% electrical energy consumption) > 50% (up to 50% electrical energy consumption) > Previous setting mode

Under GEAR operation, the setting temperature will revert back in the display screen after 3 seconds after the desired setting is selected.

## 7.8 FP Function



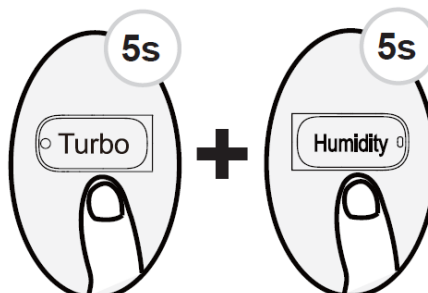
The unit will operate at high fan speed (while compressor is on) with temperature set automatically to 46°F/8°C.

Press this button two times in one section under HEAT mode and a set temperature of 60°F/16°C to activate FP function.

Press On/Off, Sleep, Mode, Fan, or Temperature button while operating to cancel this function.

**Note:** This function is for heat pump only.

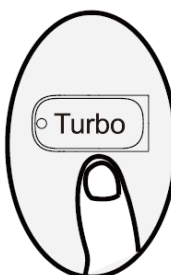
## 7.9 Lock Function



Press the Humidity button and Turbo button at the same time for more than 5 seconds to activate the Lock function.

All buttons will become non-responsive. Press these two buttons again for 2 seconds to disable the Lock function.

## 7.10 Turbo Function

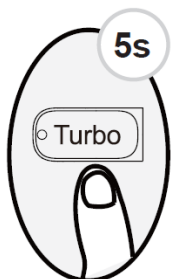


When the Turbo feature is activated in COOL mode, the unit will blow cool air with the strongest wind setting to jump-start the cooling process.

When the Turbo feature is activated in HEAT mode, the unit will blow warm air with the strongest wind setting to jump-start the heating process (some units).

For units with electrical heating elements, the electrical heater will activate and jump-start the heating process.

## 7.11 Super Heat Function



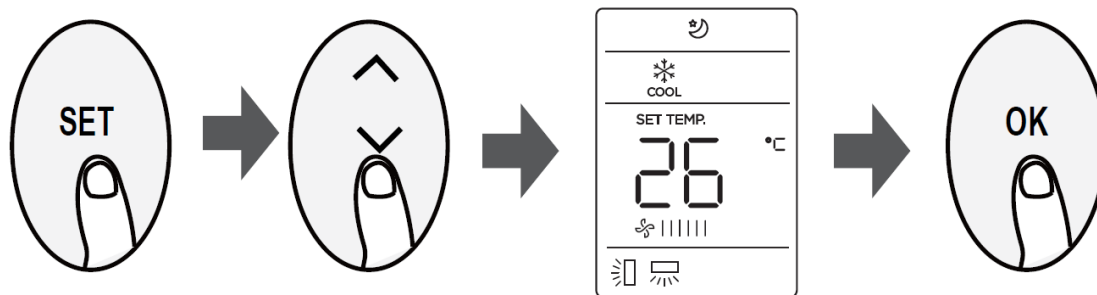
Press the Turbo button for 5 seconds while in Heating/Auto mode to initiate super heat function. To stop this feature, press the button for 3 seconds. This function is mainly used to improve the heating speed of the unit at low temperatures.

Under Super Heat mode, the louver will open to the maximum angle to enable unit to reach the preset temperature in the shortest possible time.

**Note:** The anti-cold air feature is disabled 5 minutes after the compressor starts. This may result in low air outlet temperature.

- If the Super Heat function is activated, "On" displays for 3 seconds on the indoor unit display window.
- If the Super Heat function is stopped, "OFF" displays for 3 seconds on the indoor unit display window.
- Change the mode or turn the unit off to stop the super heating operation.

## 7.12 Set Function



- Press the SET button to enter the function setting, then press the SET button or Temp Up or Temp Down button to select the desired function. The selected symbol will flash on the display area. Press the OK button to confirm.
- To cancel the selected function, perform the same procedures as above.
- Press the SET button to scroll through operation functions as follows:

Active Clean (🌀) > Fresh\* (🍃) > Sleep\* (🌙) > Follow Me (👤) -> AP Mode (📶)

[\*]: Only available for the units with this feature.

### Fresh Function:

When the Fresh function is initiated, the Ionizer/ Plasma Dust collector is energized and will help to remove pollen and impurities from the air.

### Sleep Function:

The sleep function is used to decrease energy use while you sleep (and don't need the same temperature settings to stay comfortable). This function can only be activated via remote control.

**Note:** The sleep function is not available in FAN or DRY mode.

### AP Function:

Choose AP mode to complete wireless network configuration. For some units, it doesn't work by pressing the SET button. To enter AP mode, continuously press the LED button seven times within ten seconds.

### Active Clean Function:

The Active Clean Technology washes away dust, mold, and grease that may cause odors when it adheres to the heat exchanger by automatically freezing and then rapidly thawing the frost. When this function is turned on, the indoor unit display window shows "CL". After 20 to 45 minutes, the unit will turn off automatically and cancel the Clean function.

### Follow Me Function:

The Follow Me function enables the remote control to measure the temperature at its current location and send this signal to the unit at an interval of every 3 minutes. When using AUTO, COOL, or HEAT modes, measuring ambient temperature from the remote control (instead of from the indoor unit itself) will enable the unit to optimize the temperature around you and ensure maximum comfort.

**Note:** Press the Set button to select the Follow Me function, then press the OK button to confirm. Pressing the OK button for 3 seconds will start/stop the memory feature of the Follow Me function.

- If the memory feature is activated, "On" displays for 3 seconds on the screen.
- If the memory feature is stopped, "OFF" displays for 3 seconds on the screen.
- While the memory feature is activated, pressing the ON/OFF button, switching the mode, or power failure will not cancel the Follow Me function.



# MRCOOL® Mini-Split Remote Control

The design and specifications of this product and/or manual are subject to change without prior notice.  
Consult with the sales agency or manufacturer for details.